



Surface drainage & stormwater management for sustainable infrastructure. DoT, ports and airports

BG-Graspointner Inc. webinar conducted by



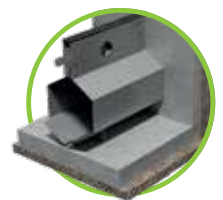
Chitresh Prakash
National Business Development Manager
BG-Graspointner Inc.
Mobile: +1 514 290 9455
chitresh.prakash@bg-graspointner.com



BG-FILCOTEN pro G



BG-FILCOTEN one



BG-GATIC castslot



BG-AQUA citybloq



Webinar Content

- **Sustainability & linear surface drainage**
 - Green manufacturing that sets BG-Graspointner apart
 - The ,why' of High Performance Concrete (HPC) through sustainable manufacturing processes
 - Material properties & advantages of FILCOTEN HPC
 - Life cycle assessment (LCA) and carbon footprint
 - Benefits of linear drainage vs point drains
- **Solutions for infrastructure/airports/ports/rail & DoT applications**
 - System design
 - Trench drains for heavy duty applications
 - Specialized slot drains for airports/ports
 - Specialized solutions for shallow applications
 - Watertight access covers for utilities
 - Modular stormwater system for infiltration/detention
 - 100% recyclable permeable ground grids (low impact development)
- **How BG makes your project a success**
 - Product selection & Hydraulic calculations
 - Specifications support
 - CAD layout for projects in design
 - Project showcases
- **Other topics**
 - Website tools
 - BIM data

